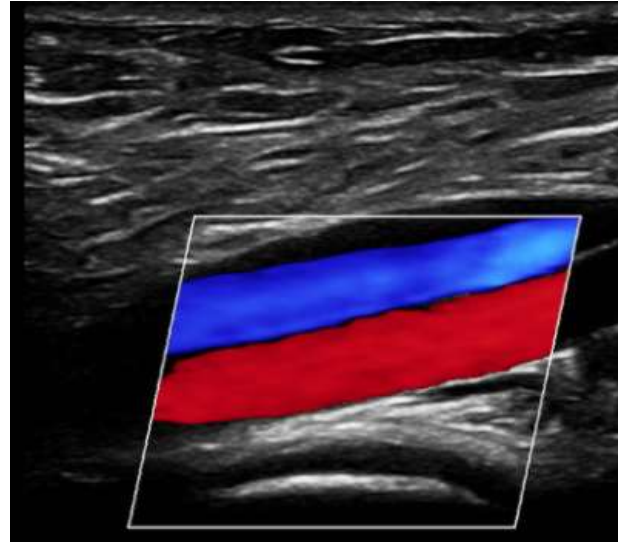
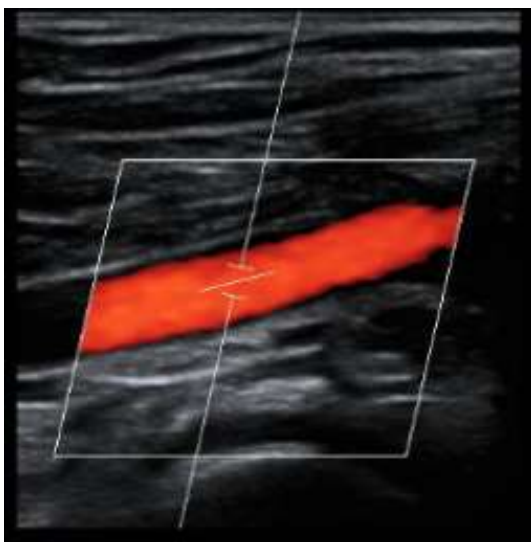
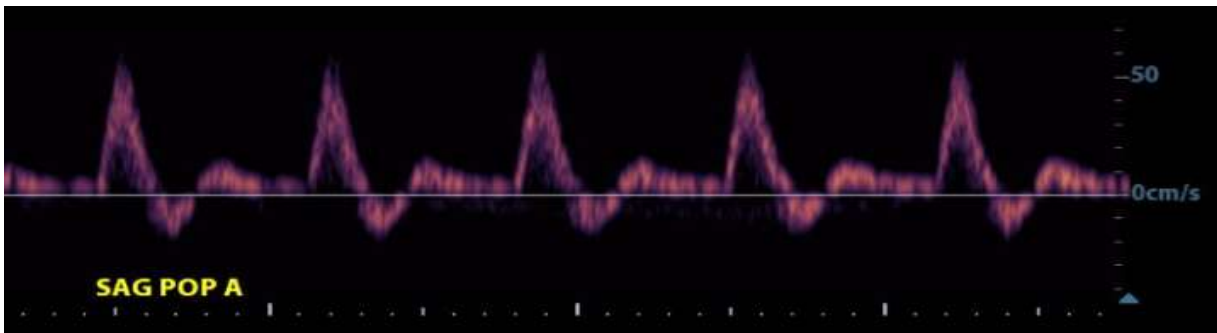
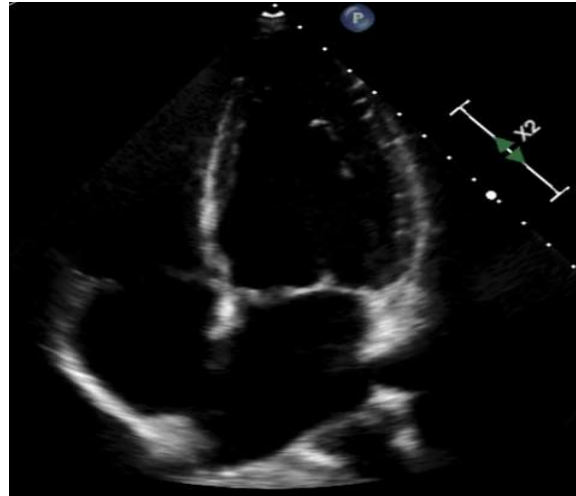
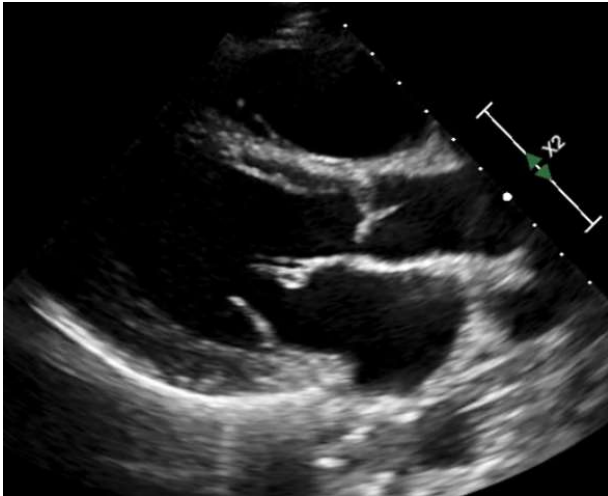


# Cardiovascular Sonography Program Information Packet



## General Information

The Weatherford College Cardiovascular Sonography Program is a 19-month curriculum comprised of classroom, laboratory, and clinical learning experiences. This is a full-time program. Classroom and scanning lab sessions are on campus from 5:00 p.m. to 10:00 p.m. The practicum clinical experiences are typically from 8:00 a.m. - 5:00 p.m. as arranged with the externship affiliates. The course of study is comprised of 64 semester credit hours and is designed to prepare individuals for careers as entry-level adult cardiac and vascular sonographers.

*Weatherford College is an affirmative action/equal opportunity employer. Applicants are considered on the basis of qualifications without regard to gender, age, race, color, creed, religion, national or ethnic origin, veteran status, or the presence of a non-job-related disability or any other legally protected status.*

## Institutional Accreditation

Weatherford College is institutionally accredited by:

**Southern Association of Colleges and Schools Commission on Colleges (SACSCOC)**

1866 Southern Lane

Decatur, GA 30033

P: (404) 679-4500

<https://sacscoc.org/>

## Program Goals

The goal of the Cardiovascular Sonography Program is to prepare competent entry-level sonographers in the cognitive (knowledge), psychomotor (skills), and affective (behavior) learning domains for the following concentrations:

1. Adult cardiac sonography
2. Vascular sonography

## Application Requirements

All prospective students are required to meet the admission criteria. In addition, all applicants should be free of illegal drug use, have no felony convictions, and be clear of any misdemeanor convictions other than minor traffic violations. **For more information about the application procedures please call (817) 598-6217.**

Applications for admission will be accepted beginning the **first business day in May through the last business day of July** each year for the Cardiovascular Sonography Program. One cohort of 16 students will be accepted for a January start each year.

Apply to Weatherford College by completing the **Coyote Recruit** admissions application (*detailed instructions can be found here: <https://wc.edu/admissions/how-to-apply/transfer-students.php>*)

1. **Complete Sonography Program prerequisites.** Science courses (BIOL 2401 and 2402) must be current within the past 5 years at the time of admission.
2. **Complete the HESI-A2 Entrance Exam** (*must have a **minimum score of 75%** on both the reading comprehension and math sections*). The HESI-A2 exam does not have to be taken at Weatherford College, but must demonstrate scores for reading, math, A&P, grammar and vocabulary).
3. **Proof of Hepatitis B Vaccine** (if student does not have a positive titer, this must be complete prior to the Fall semester).
4. **Submit the Health & Human Sciences Application to the Health & Human Sciences Office** [link to application here: [HHS Application](#) ] This must include:
  - a. **Official or unofficial transcripts and HESI-A2 scores**
    - a. This is in addition to the official transcript the student will submit to Student Services when applying to Weatherford College
  - b. **Proof of Hepatitis B immunization or positive titer with application**

**Failure to meet all application requirements will result in denial of application.**

## Scoring Methods

*Selection into the program is based on the following scoring methods:*

### 1. Prerequisite Courses

*All prerequisite courses must be completed with a grade of "C" or higher. GPA of 3.5 for prerequisites is recommended. Points are awarded for each course completed.*

**Please Note:** The student is only allowed 2 attempts in the required pre-req courses for the Sonography Degree Programs.

A = 4 points, B = 3 points, C = 2 points

- BIOL 2401: Anatomy and Physiology I
- BIOL 2402: Anatomy and Physiology II
- MATH 1314: College Algebra or higher
- ENGL 1301: English Composition I
- PSYC 2301: General Psychology
- PHYS X4XX: College Level Physics Course
- Elective X3XX: Language/Philosophy/Culture/Creative Arts

+2 Bonus Points if the student successfully completes Medical Terminology with a B or higher at the college level within the last 5 years.

## 2. Points Awarded for Previous Degree

Master's = 8 points, Bachelor's = 6 points, Associate's = 4 points

## 3. Points Awarded for Prior Medical Work Experience

- 2 points per year of *\*full-time* work experience that involves *\*\*direct patient care*. Maximum of 6 points allowed.
- Consideration for credit for human medical work experience requires submission of a letter from your employer stating:**
  - Dates you were employed
  - Specific duties you performed in your role (involving patient care)
  - Signature of employer with their business contact information

**This letter MUST be submitted with your application.** The program will verify employment on a case-to-case basis.

\*Full-time is considered at least 32 hours per week.

\*\*Direct patient care requires providing care to persons needing health services, not supporting roles that provide patient care.

- **Roles that would earn medical work experience points:** phlebotomist, transporter at hospital, medical assistant, certified nurse's assistant, etc.
- **Roles that would not earn medical work experience points:** working the front desk in an ER or physician's office, cleaning medical instruments, working in the billing department of a medical facility, etc.

## HESI- A2 Entrance Exam Scores

Points are awarded based on the average scores from the Reading, Math, A & P, Grammar, and Vocabulary sections. **Only applications that demonstrate a score of  $\geq 75$  in the Reading Comprehension and Math sections will be considered.** This exam can be taken more than once. Points are awarded based on the following scale:

90-100 = 4 points, 80-89 = 3 points, 75-79 = 2 points,  $\leq 74$  = 0 points

### HESI A2 Entrance Exam

Please, schedule your HESI A2 Entrance Exam here: <https://www2.registerblast.com/weatherford/Exam/List>  
If you have previously completed the HESI A2 exam within the past 2 years that tested Math, Reading, A&P, Grammar and Vocabulary, email those results to Tammi White ([twhite@wc.edu](mailto:twhite@wc.edu)) when you submit your application.

### 5. Personal Interview

Only the top 35-40\* applicants who have the highest points will be selected for an interview. All applicants will be contacted via e-mail. Interviews will be scored.

*\*Number selected is subject to change.*

### 6. Final Ranking Process

- Number of points based on these sections:
  - Pre-req courses (maximum of 30 points can be obtained)
  - Average of HESI-A2 scores (maximum of 4 points can be obtained)
  - Highest degree earned (maximum of 8 points can be obtained)
  - Work experience (maximum of 6 points can be obtained for full-time work related directly to patient care)
- Personal interview score (maximum of 35 points can be obtained)

The \*sixteen applications with the highest cumulative points will be accepted each Fall semester. Alternates will be accepted on a stand-by basis. *\*subject to change*

### Additional Requirements if Accepted for Clinical Placement

1. Complete a criminal background check and a 10-panel urine drug screen
2. Submit proof of up-to-date immunizations including Hepatitis B, TDAP, MMR, influenza and varicella
3. Obtain a TB screen test and a back/spine screen
4. Submit proof of major medical health insurance and obtain current American Heart Association Health Care Provider CPR (valid through 2 years)

*Information and specifics on obtaining the above criteria will be available to the student upon acceptance to the program. Start-up costs for immunizations, titers, urine drug screen, CPR, back/spine screen, and health insurance varies, but could run as much as \$400.*

## Cardiovascular Sonographer Wages

The average base salary for cardiovascular sonographers in the Dallas area as of October 2024 is \$82,293 per year; \$39.56 per hour according to salary.com.

**Reference:** [https://www.salary.com/research/salary/hiring/cardiovascular-sonographer-salary/dallas-tx#google\\_vignette](https://www.salary.com/research/salary/hiring/cardiovascular-sonographer-salary/dallas-tx#google_vignette)

## Technical Standards

The following must be able to be performed by each student who is accepted into the sonography program in order to carry out the responsibilities required of a sonographer based on analysis of current literature, expert opinion, open forum commentary and formal consensus. Listed below are some of the technical standards that sonographers must be able to routinely perform. If an individual is unable to meet the technical standards, they will need to speak directly with the program director and will be referred to the ADA department.

- Lift more than 50 pounds routinely (be able to assist patients on and off examination tables)
- Push, pull, bend and stoop routinely
- Have functional use of both hands, wrists and shoulders
- Working standing on feet 80% of the time
- Distinguish audible sounds
- Adequately view sonograms, including color distinctions
- Communicate effectively with patients and other health care professionals
- Organize and accurately perform the individual steps in a sonographic procedure in the proper sequence

*Reference: Society of Diagnostic Medical Sonography*

## Special Services and Student Accommodations (ADA)

Students or prospective students with disabilities can contact the Office of Accommodations/Disabilities. The Office of A/D exists to assist students with documented disabilities as they pursue their goal of a college education. The office serves as a liaison between students and the college in matters of communication and action toward achievement of reasonable accommodations. Each student is encouraged to act as his or her own advocate, and take the major responsibility for securing accommodations. The Office of A/D provides students with the voluntary and confidential means to seek accommodations for academic and related needs. Early and regular contact will assure the timely identification of needed services and the location of resources and options available to the student. Eligibility for disability services at Weatherford College is dependent upon the nature of the disability and its impact on learning. A disability is defined as any mental or physical condition that substantially limits an individual's ability to perform one or more major life activities. These disabilities may be: physical, visual or auditory, neurological or psychological in nature, and also include chronic health problems and

learning and communication disorders. Any student with a documented disability (e.g. learning, psychiatric, vision, hearing, etc.) may contact the Office of Disabilities in room 118, in the Student Services Building, upper floor on the Weatherford College Weatherford Campus to request reasonable accommodations. Phone: **817-598-6350** Office Location: **Office Number 118 in the Student Services Building**, upper floor, Weatherford College 225 College Park Drive Weatherford, TX

# Cardiovascular Sonography Curriculum

## Prerequisite Courses

BIOL 2401: Anatomy and Physiology I  
BIOL 2402: Anatomy and Physiology II  
MATH 1314: College Algebra or higher  
ENGL 1301: English Composition I  
PSYC 2301: General Psychology  
PHYS X4XX: College Level Physics Course  
Elective X3XX: Language/Philosophy/Culture/Creative Arts

## Spring: Semester I | First 8 Weeks

DMSO 1110: Introduction to Sonography  
DSVT 1103: Introduction to Vascular Technology  
DSAE 2303: Cardiovascular Concepts  
DMSO 1302: Basic Ultrasound Physics

## Spring: Semester I | Second 8 Weeks

DSVT 2200: Vascular Technology Applications  
DSAE 1340: Diagnostic Electrocardiography  
DMSO 1302: Basic Ultrasound Physics

## Summer: Semester II

DSVT 1300: Principles of Vascular Technology  
DSAE 1315: Principles of Adult Cardiac Sonography  
DSAE 2404: Cardiac Sonography Pathophysiology

## Fall: Semester III

DSVT 1364: Practicum I  
DSVT 2335: Advanced Vascular Technology  
DSAE 2335: Advanced Cardiac Sonography

## Spring: Semester IV

DSAE 2464: Practicum II

## Summer: Semester V

DSAE 2365: Practicum III  
DSMO 2130: Advanced Ultrasound and Review



## English Proficiency Procedure

International applicants, any visa holders, permanent residents, and exchange students whose native language \* is not English must provide proof of English proficiency. Sonography applicants must possess proficiency in oral English communication skills that allow for interaction in the classroom, skills laboratory, and clinical practice settings to successfully complete required course work and to provide a safe client care environment. Applicants must demonstrate the use of acceptable grammar and pronunciation in formal verbal classroom presentations and verbal interactions with a variety of healthcare professionals, faculty, peers, and clients/patients in diverse clinical settings. **Note: Proof of English proficiency must be provided by the end of the application period for the desired allied health program.**

Applicants from the following list of countries with majority English speaking populations are excluded from this procedure:

- **Anguilla**
- **Antigua & Barbuda**
- **Ascension**
- **Australia**
- **Bahamas**
- **Barbados**
- **Belize**
- **Bermuda**
- **Canada** (except Quebec)
- **Channel Islands**
- **Dominica**
- **Falklands**
- **Grenada**
- **Guyana**
- **Ireland (Erie)**
- **Jamaica**
- **Liberia**
- **Montserrat**
- **New Zealand**
- **St Christopher (St Kitts) & Nevis**
- **St Lucia**
- **St Helena**
- **St Vincent & the Grenadines**
- **South Africa**
- **Trinidad & Tobago**
- **United Kingdom**  
-England, Isle of Man, Wales  
Northern - Ireland, Scotland
- **Virgin Islands**

Applicants who desire to enroll in programs that include a clinical practice component must demonstrate oral English proficiency. Transfer applicants who cannot demonstrate exemption as outline below are also required to demonstrate oral English proficiency as outline in this procedure. One of the following constitutes proof:

1. TOEFL iBT – A score of 20 or greater is required on the speaking skills component. A composite score of 83 or greater is required. Four scaled section scores in Reading, Listening, Speaking, & Writing are required. An official copy of test scores must be received from Educational Testing Services (ETS) before the last day of the specific application period for the appropriate allied health program. Web site: <http://www.ets.org/toefl/index.html>. When registering for the exam, please have official scores sent to Weatherford College (School Code – 6931)
2. An associate degree or baccalaureate degree from a regionally accredited U.S. college or university.
3. 4 years of study and a diploma from a U.S. high school.



The applicant must submit an official transcript or official TOEFL iBT results at the time the application is submitted. Weatherford College does not offer this test. Please access this website for testing dates, fee schedules and testing sites: <http://www.ets.org/toefl/index.html>

- English as an official language (language that is used on official documents, spoken on radio & television, included in a nation's constitution) does **not exempt** the applicant from the language proficiency requirement.
- Copies of GED scores and/or TOEFL scores without the speaking skills score will not be accepted as proof of spoken English proficiency.
- National Council on the Evaluation of Foreign Educational Credentials U.S. equivalence awards will not be accepted as proof of spoken English proficiency.
- U.S. citizenship by naturalization process will not be accepted as proof of spoken English proficiency.

**\*A native language is a language that is acquired naturally during childhood and is usually spoken at home, as opposed to a language that is learned later in life, for example, as part of a person's formal education.**

Sources: Oakland University, Rochester Hills, MI University of Texas at Arlington, Arlington, TX  
The English-Speaking Union (<http://www.esu.org/faqs.html>)

The Origin & History of the English Language (<http://www.kryystal.com/english.html>) National Council of State Boards of Nursing (NCSBN) NCSBN Fact Sheet ([www.ncsbn.org](http://www.ncsbn.org)) Information & Registration Bulletin for Internet-based Testing (iBT) TOEFL iBT 2008-2009

## Cost of the Program

Approximate student costs for the program can be found here: [Program Costs](#)

## Additional Information

To view our frequently asked questions, visit: [https://wc.edu/programs/all-programs/cardiovascular\\_sonography/faq.php](https://wc.edu/programs/all-programs/cardiovascular_sonography/faq.php)

- For questions regarding the application process, e-mail Tammi White ([twhite@wc.edu](mailto:twhite@wc.edu))
- For questions regarding the structure of the program or the sonography profession, e-mail Doug Solomon([dsolomon@wc.edu](mailto:dsolomon@wc.edu))